

DATA SHEET

B2800B/3M/50 TECH PRO

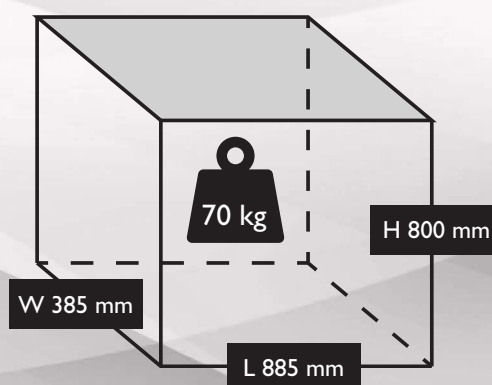
S-28DA504FPS139



UNIT DIMENSIONS



PACKAGE DIMENSIONS



TECHNICAL DATA

	Max. Pressure	10 Bar / 145 PSI
	Power	3.0 HP / 2.2 kW
	Capacity (displacement)	12.5 CFM / 355 L/Min
	Voltage	230 V / 50 Hz
	Supply	13 Amp Plug
	FLC	13
	Pump	B28B PRO (280001B)
	dB(A)	76
	Dimensions L x W x H (unit)	875 x 375 x 790 mm

	Dimensions L x W x H (boxed)	885 x 385 x 800 mm
	Weight	70 kgs
	Motor Speed	2850 RPM
	Oil Capacity	0.5 Ltr
	Receiver Size	50 Ltr
	Head Bolt Torque	27 Nm
	Cable Length	2 Mtr
	Pump Speed	1250 RPM
	Outlet Thread Size	Series 25 Coupling



E & OE
Images shown are for illustration and may vary from the actual product

Unit 5, Tower Estate,
Warpsgrove Lane,
Chalgrove,
Oxon,
OX44 7XZ

Tel: +44(0)1865 892620
Fax: +44(0)1844 390955

sales@fps-compressors.co.uk
www.fps-compressors.co.uk

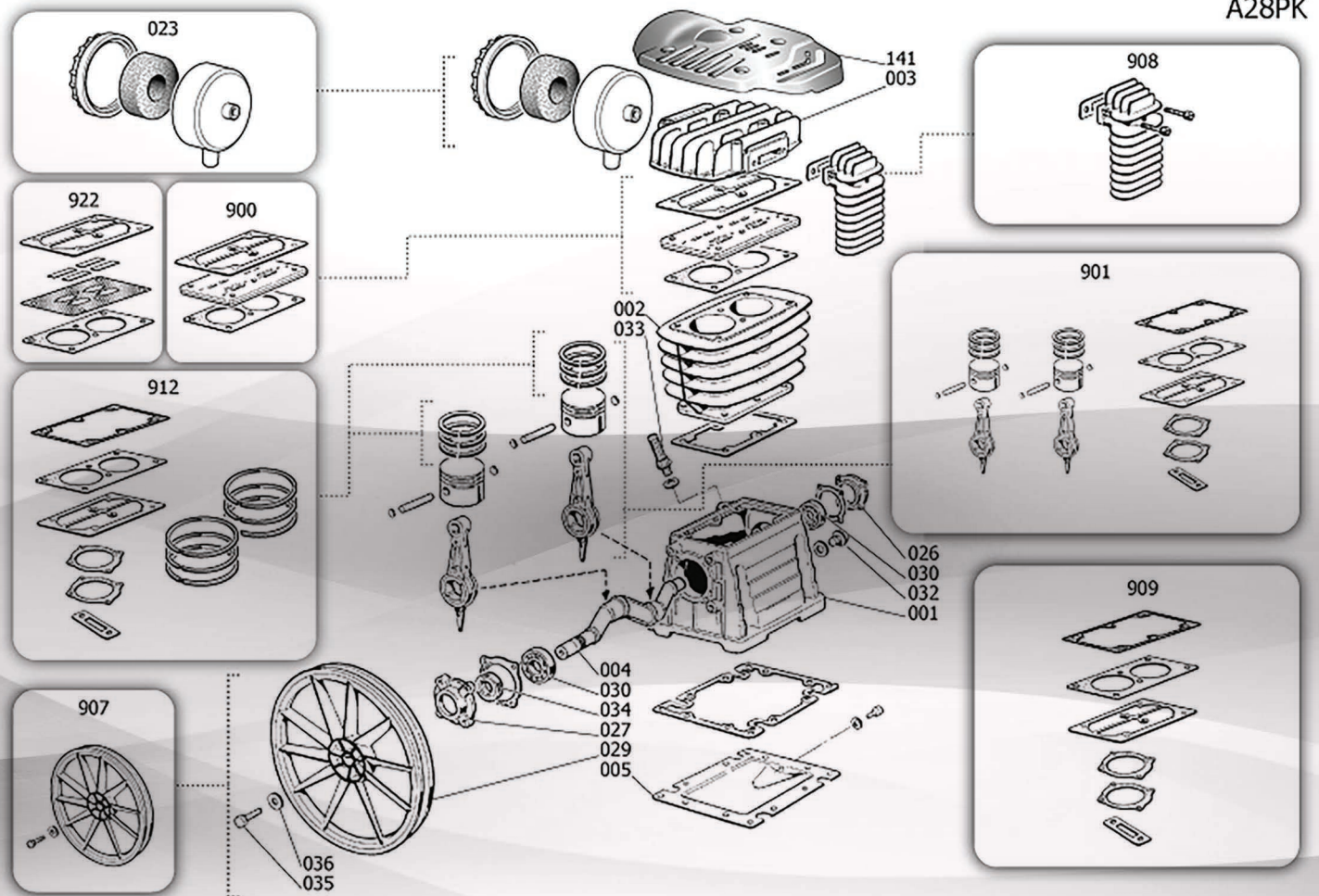


DATA SHEET

B28B PRO PUMP

280001B

B2800B/3M/50 TECH PRO (S-28DA504FPS139)



A28PK

COMPONENTS (see drawing above)

Position	Part No.	Description
2	S-9428040	Cylinder
3	S-3860410	Head
23	S-9434M04	Air Filter Kit
900	S-9434A66	Valve Plate
901	S-9434B81	Piston & Con Rod Compl
912	S-9434C09	Piston Ring Kit

OTHER SERVICE PARTS

Part No.	Description
S-PK-B28.B38/PRO	Service Kit
S-9602024	NRV Pastel
S-9602018	NRV Spring
S-9048009	NRV
S-4100688	Pressure Switch
LUB-PIST-ILT	Lubricant
S-9612113	Run Capacitor (motor)
F-002100105	Start Capacitor (motor)
S-9075016	Belt



E & OE
Images shown are for illustration and may vary from the actual product

Unit 5, Tower Estate,
Warpsgrove Lane,
Chalgrove,
Oxon,
OX44 7XZ

Tel: +44(0)1865 892620
Fax: +44(0)1844 390955

sales@fps-compressors.co.uk
www.fps-compressors.co.uk

